

The Sukhothai Ceramic Trading Along the Ocean Silk Road

Tharapong Srisuchart
and
Surat Lertlum

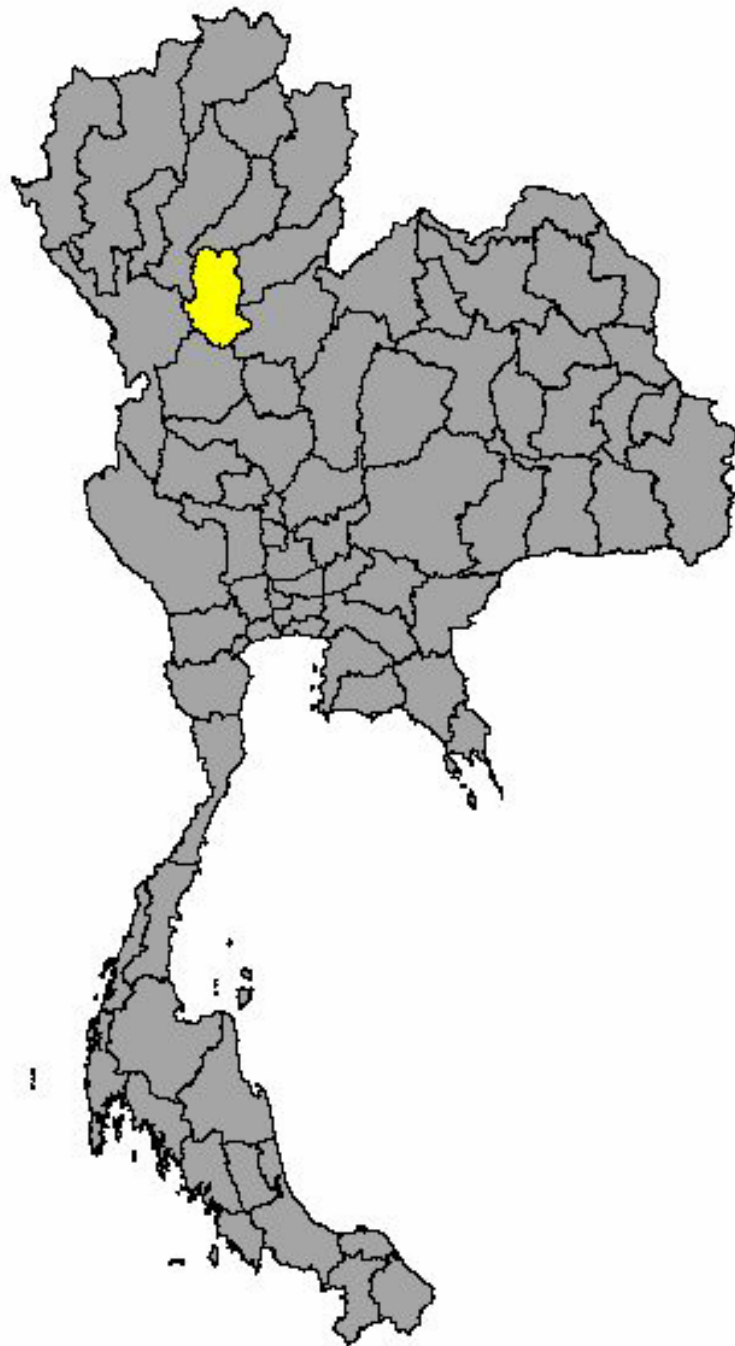
Table of Contents

- Introduction
- Objective
- Current Plan
- Conclusion

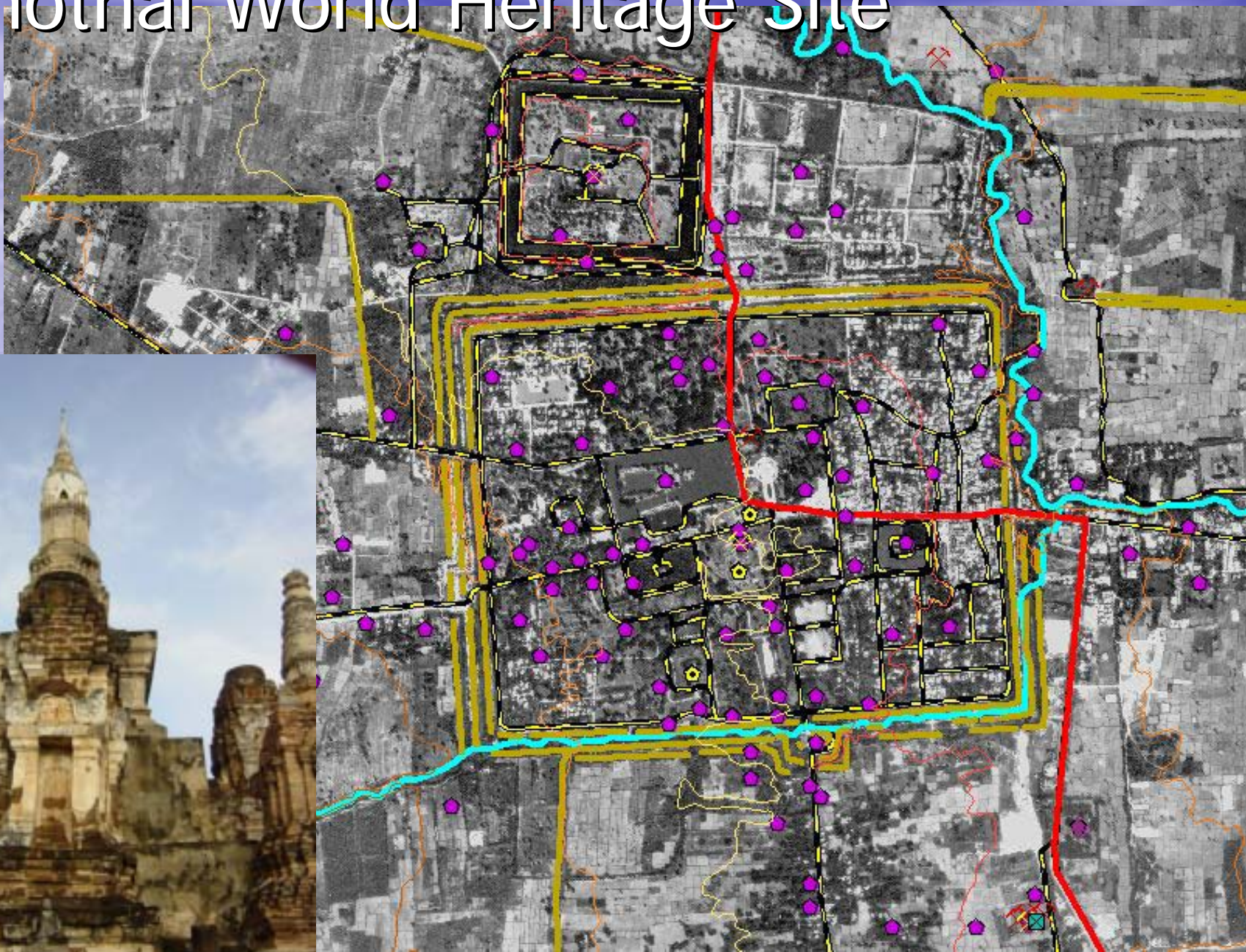
Introduction

The Sukhothai ceramic had been considered to be one of the most important goods for exporting during Sukhothai and Ayuttaya period. This presentation will describe the research proposal to analyze trading route for Sukhothai ceramic in the form of spatial analysis, including the development plan for the research on this subject as part of the ocean Silk Road study.

Sukhothai



Sukhothai World Heritage Site



Sample Klin Site at Si Satchanarai



Introduction to Sukhothai Ceramics

- Sukhothai is an ancient capital of Thailand during the 13-14 century period. The art and culture of Sukhothai period has been known through out the world, especially ceramic, which is called "Sunkalok" in Thai. The Sukhothai ceramic industry was one of the main incomes of the country during and after the period. The ceramic had been exported to countries in Asia, for example, Indonesia, Philippines, and Japan.

- The Sukhothai ceramics were found in these countries, as well as ship wreck in the sea and from the habitation layer from archaeology sites of these countries.
- In addition, this ceramic trading was also recorded in the diplomatic document "Rekidai Hoan" of Ryukyu in the same period. The "Rekidai Hoan" also shows that the commodity exchanging between Siam, China, and Japan had been carried out on the sea route of Silk Road.

Sample Sukhothai Ceramics



Celadon from Si Satchanalai Kiln, 14 – 15 century

Sample Sukhothai Ceramics



Cylinder saggars from Sukhothai and Si Satchanalai kiln

Sample Sukhothai Ceramics



Plate, black paint under glaze in floral and animal motif from Sukhothai kiln

Sample Sukhothai Ceramics



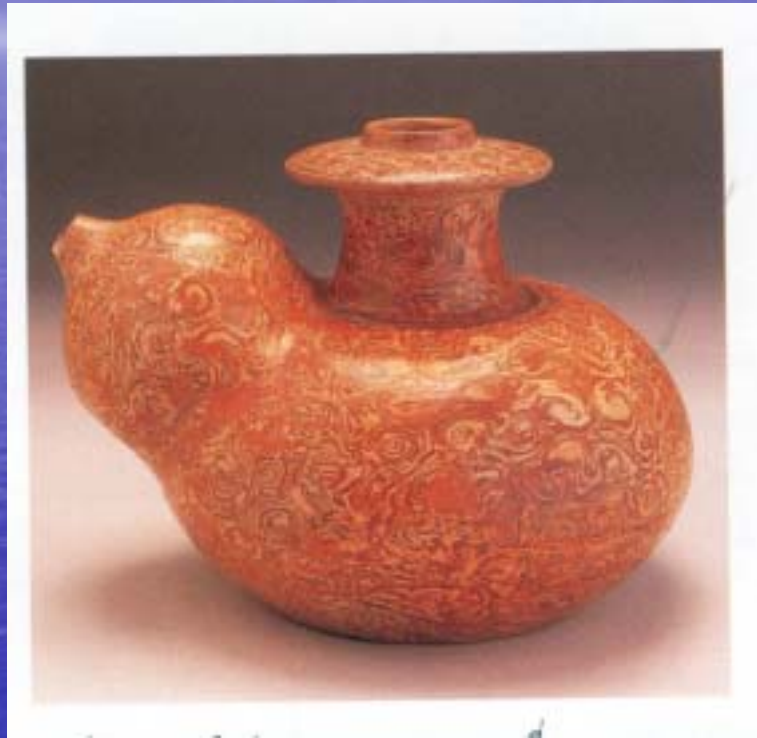
Shred, black painting under glaze from Si Satchanalai kiln

Sample Sukhothai Ceramics



Double spout vessel from Si Satchanalai, 14 – 15 century.

Sample Sukhothai Ceramics



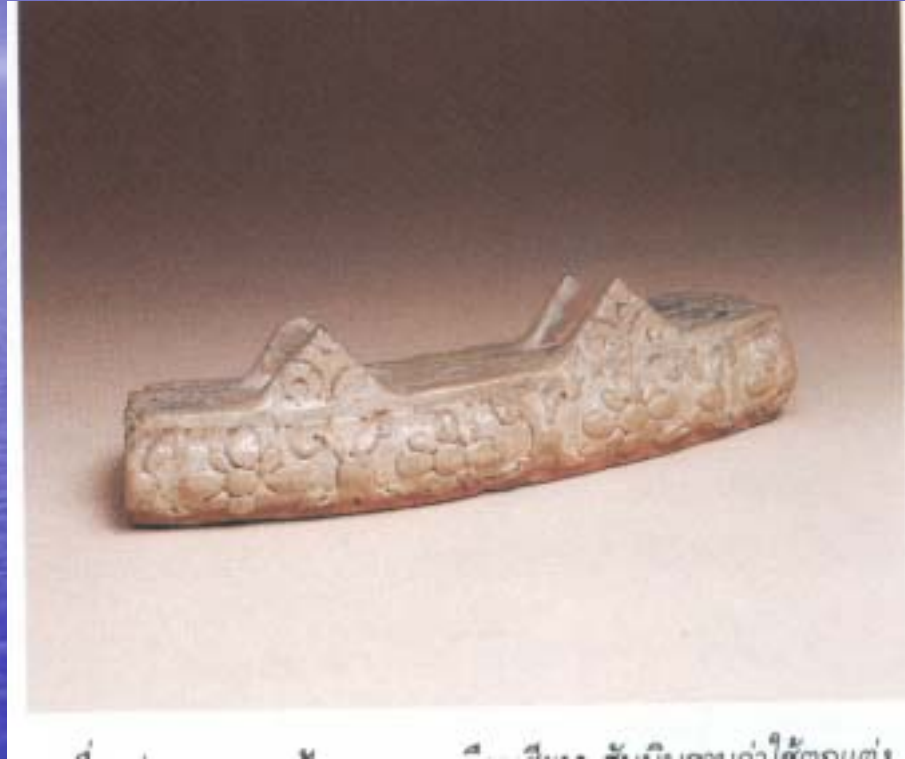
Kendi, 16 – 17 century

Sample Sukhothai Ceramics



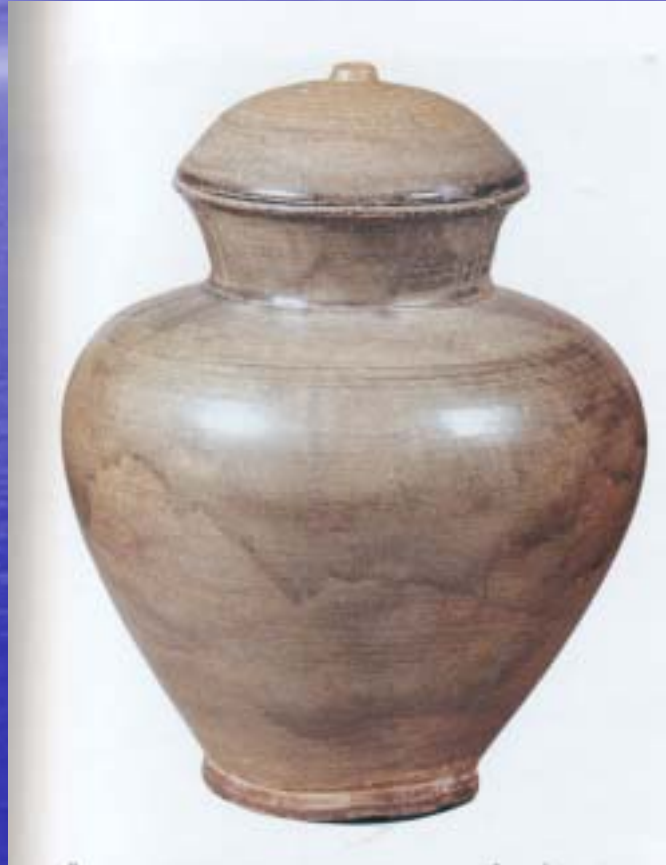
Jar, brown glazed from Si Satchanalai, 14 century

Sample Sukhothai Ceramics



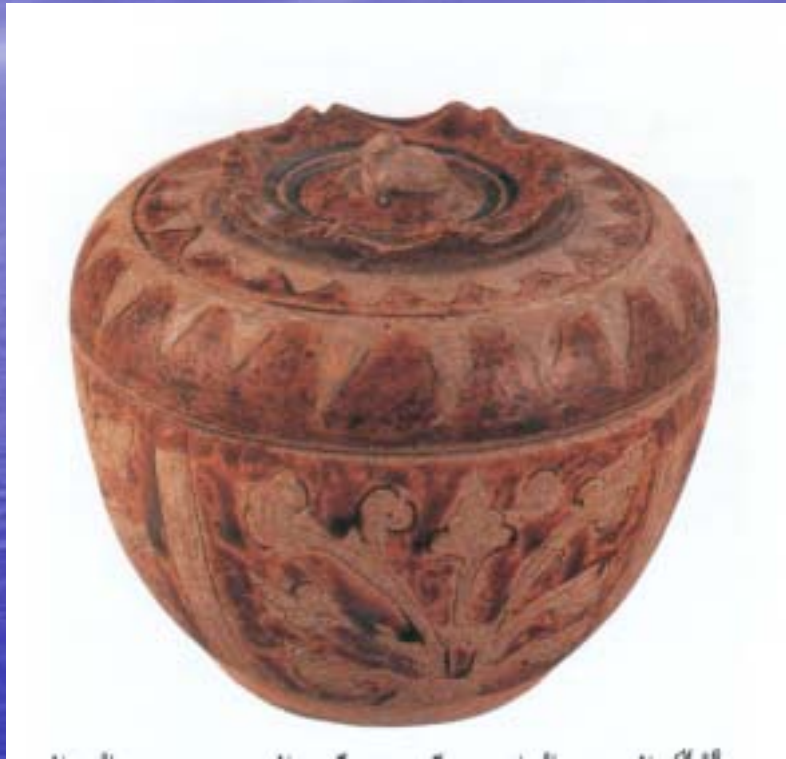
Decorative terra cotta in white glaze from Si Satchanalai, 16 century

Sample Sukhothai Ceramics



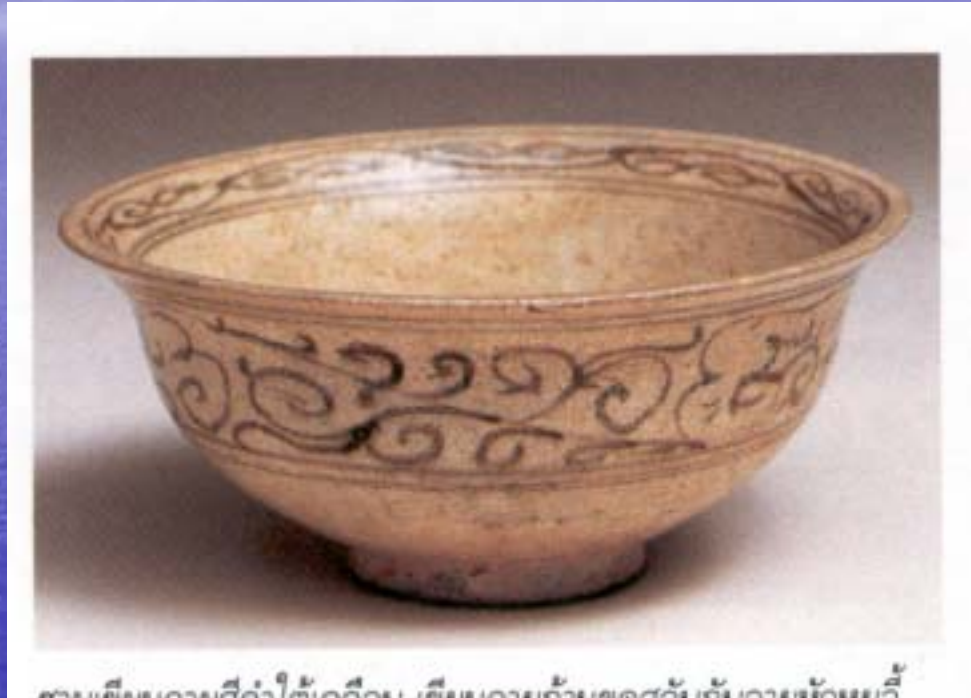
Covered jar with olive glaze from Si Satchanalai, 14 century

Sample Sukhothai Ceramics



Stoneware box in bicolor floral decorative from Si Satchanalai, 14 century

Sample Sukhothai Ceramics



Underglaze bowl in black paint from Sukhothai, 15 century

Sample Sukhothai Ceramics



Kendi, under glaze black paint in floral motif from Si Satchanalai, 15 century

Sample Sukhothai Ceramics



Sukhothai Ceramic Comparing to Southern China Ceramic

Objective

- To develop Detail Database about Sukhothai Ceramics which include :
 - GIS database of kiln sites
 - Database of ceramics found at each kiln site
 - Database of sites that Sukhothai ceramics were found
 - Database of information related to Sukhothai ceramics
- To Analyse the gathered information in order to identify the distribution and relationship of Sukhothai ceramics and ocean silk road

Current Plan

- Development of GIS Database of
 - Kiln sites (from magnetic survey)
 - Locations of ship wreck that Sukhothai ceramics were found, and ceramics found
 - Locations of places that Sukhothai ceramics were found outside Thailand, and ceramics found

Analysis of Sukhothai Ceramic Trading



Conclusion

- This is the start of the development that can open a new way of thinking about archaeology
- Preliminary work has been started to collect available dataset
- The collaboration is welcome