

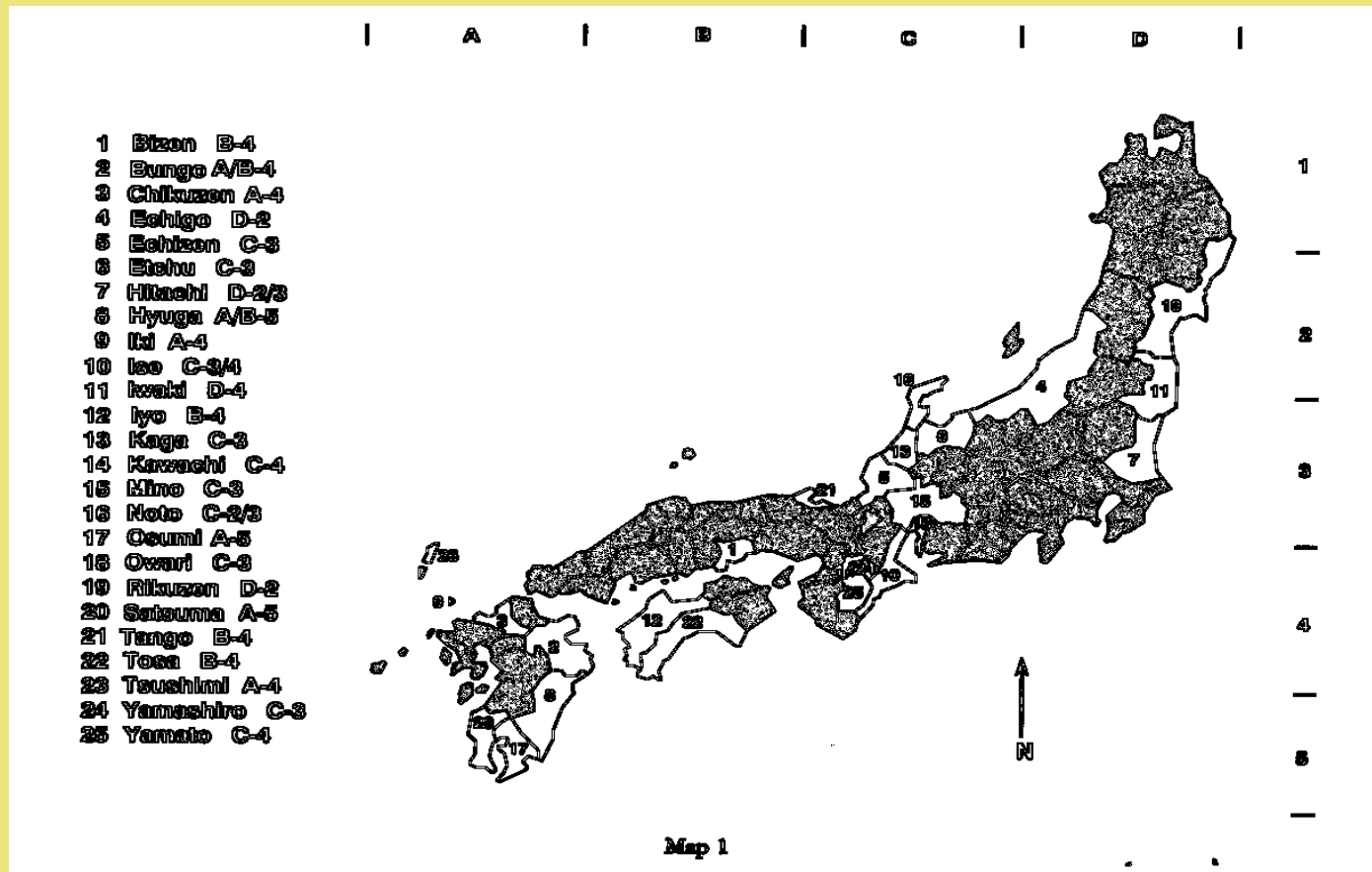
***Finding Past Places in Present
Time: Locating Japanese
Pre-Modern Villages***

Pacific Neighborhood Consortium
Annual Conference, Bangkok, Thailand
November 8, 2003

Philip C. Brown
Ohio State University

Background

- Historian
 - Japan: ca 1580 – 1900
 - Social, local (Hokuriku)

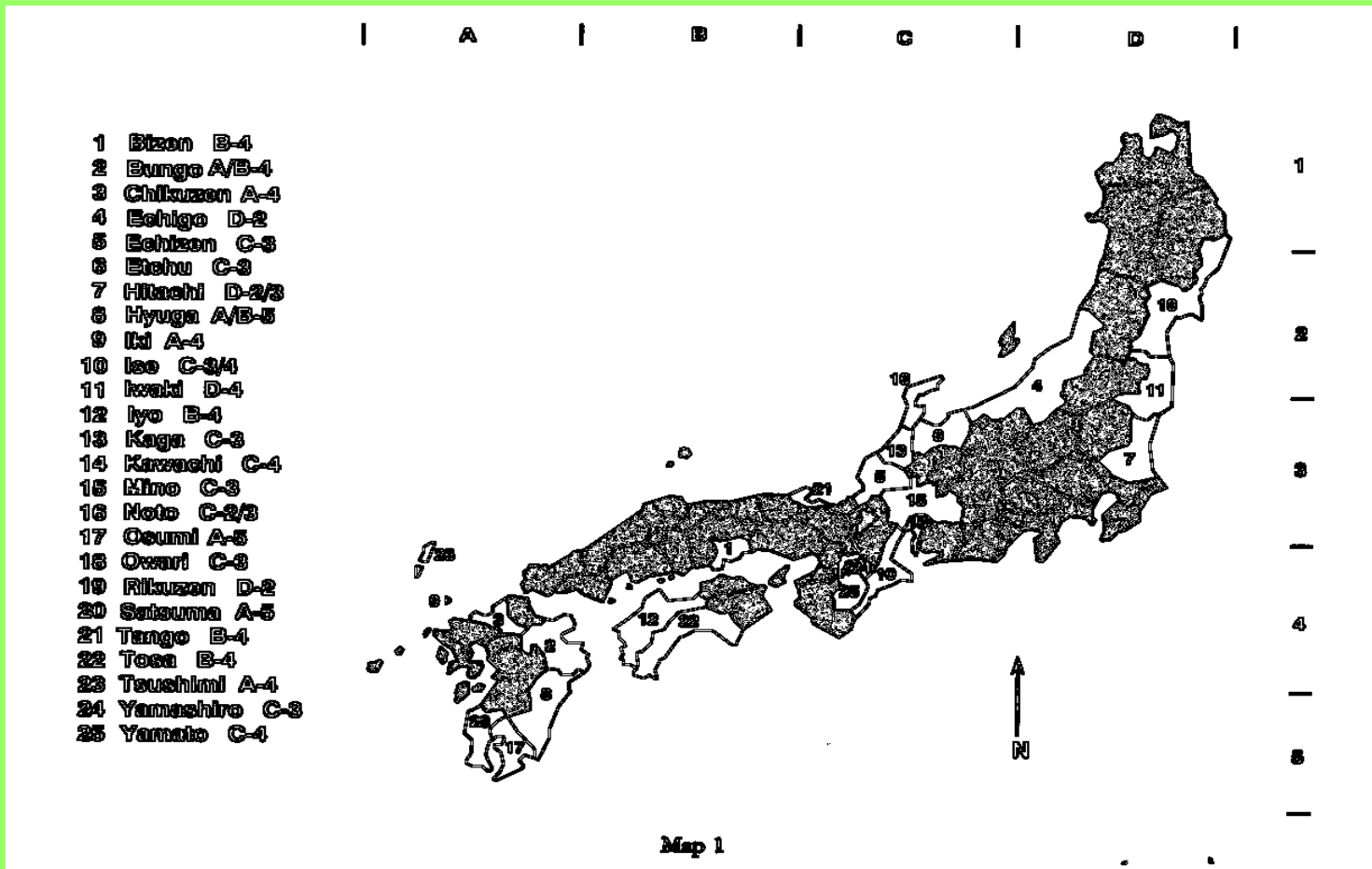


Key Research Concerns

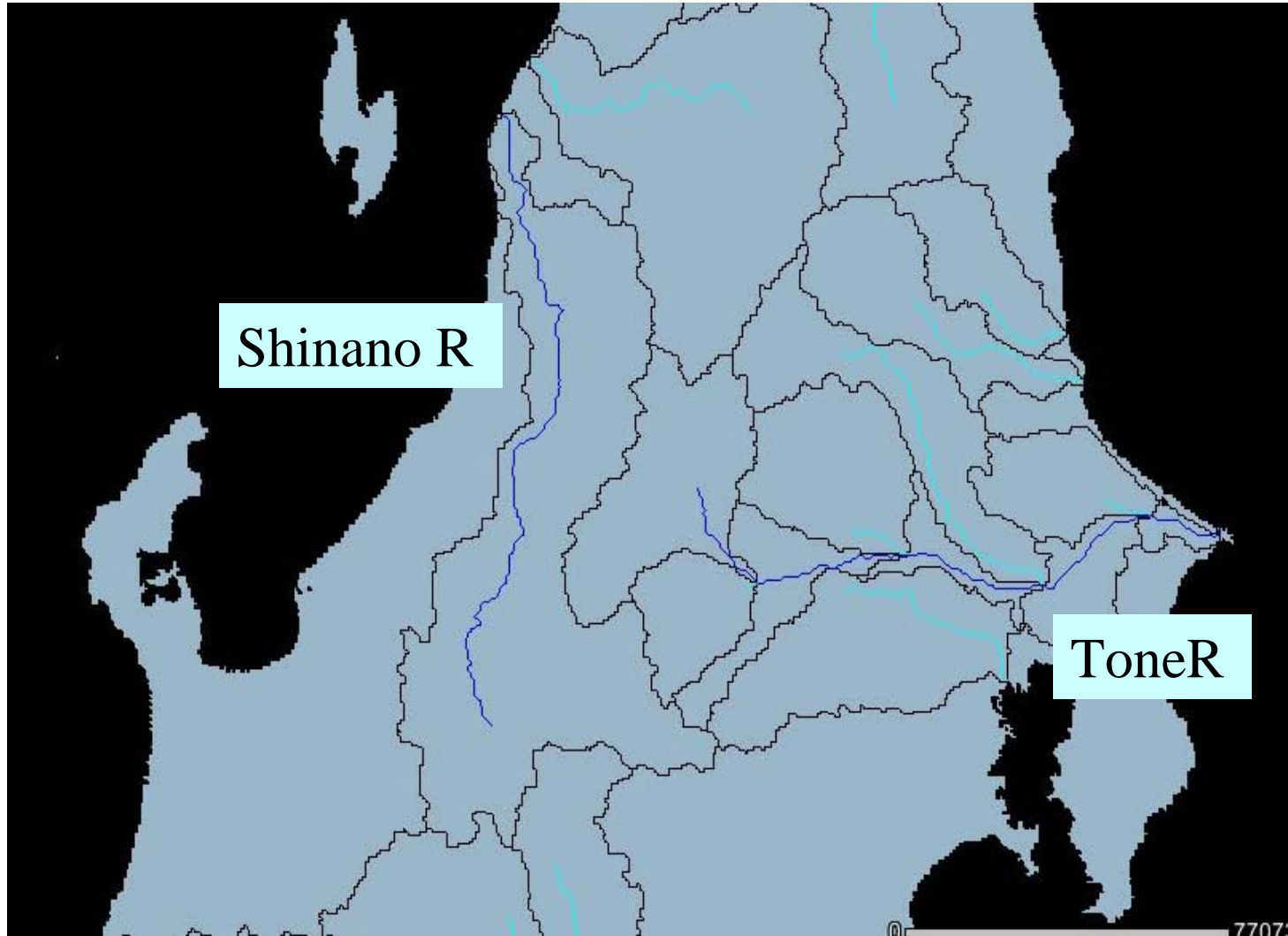
- Conditions determining levels of land taxation, ca. 1600 – 1868 (what factors did domains consider?)
- Institutions of corporate (village) control of arable land
- Tie to natural surroundings & conditions
 - Non-Agricultural considerations in setting land tax (fish, forestry; distance from castle town & administrative headquarters)
 - Propensity to flooding/landslides linked to corporate landholding

Implications for a GIS Study

- Concern for many cases
 - Tax data for Kaga domain



- Broad Area Coverage
 - Hydrological conditions that bear on particular locations

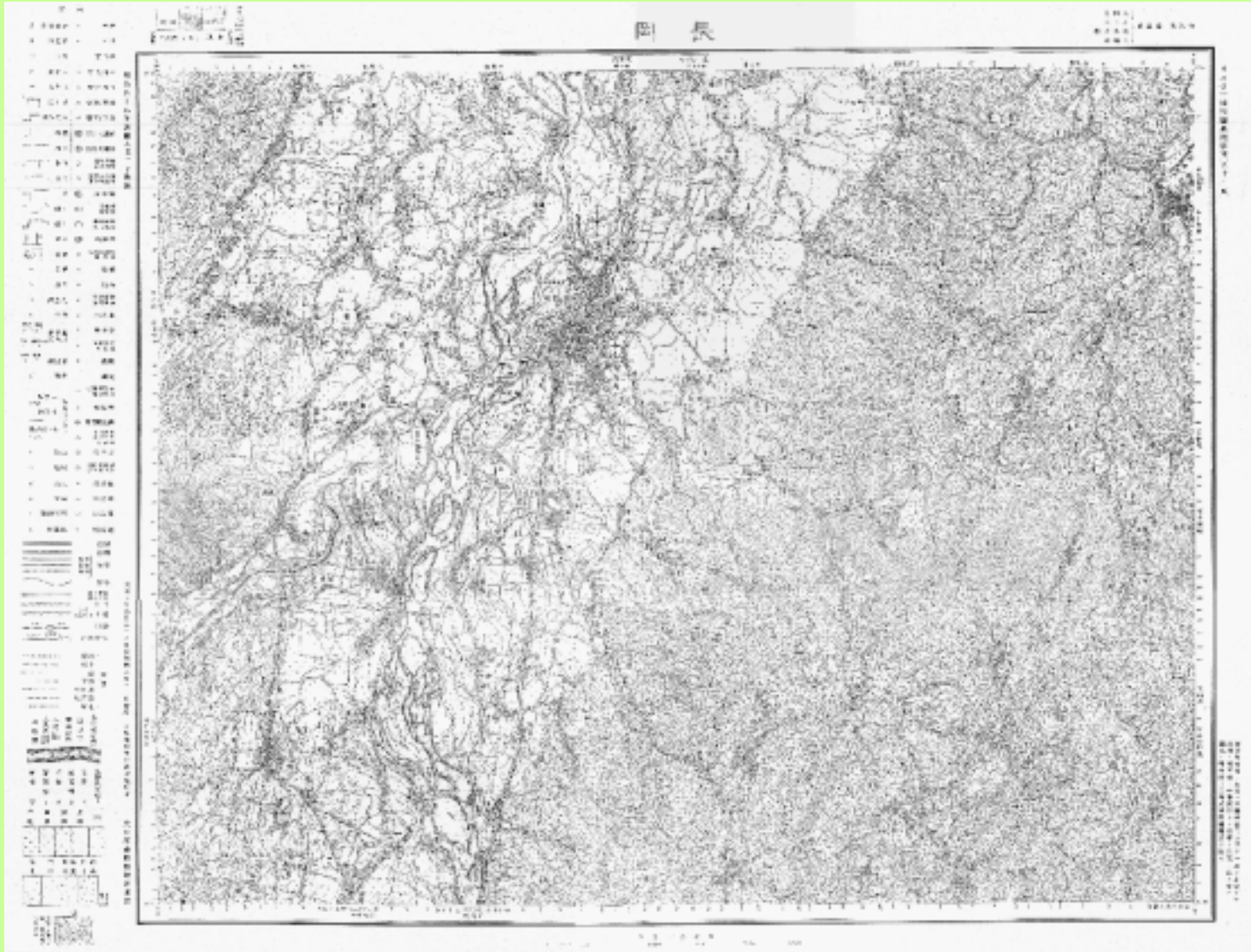


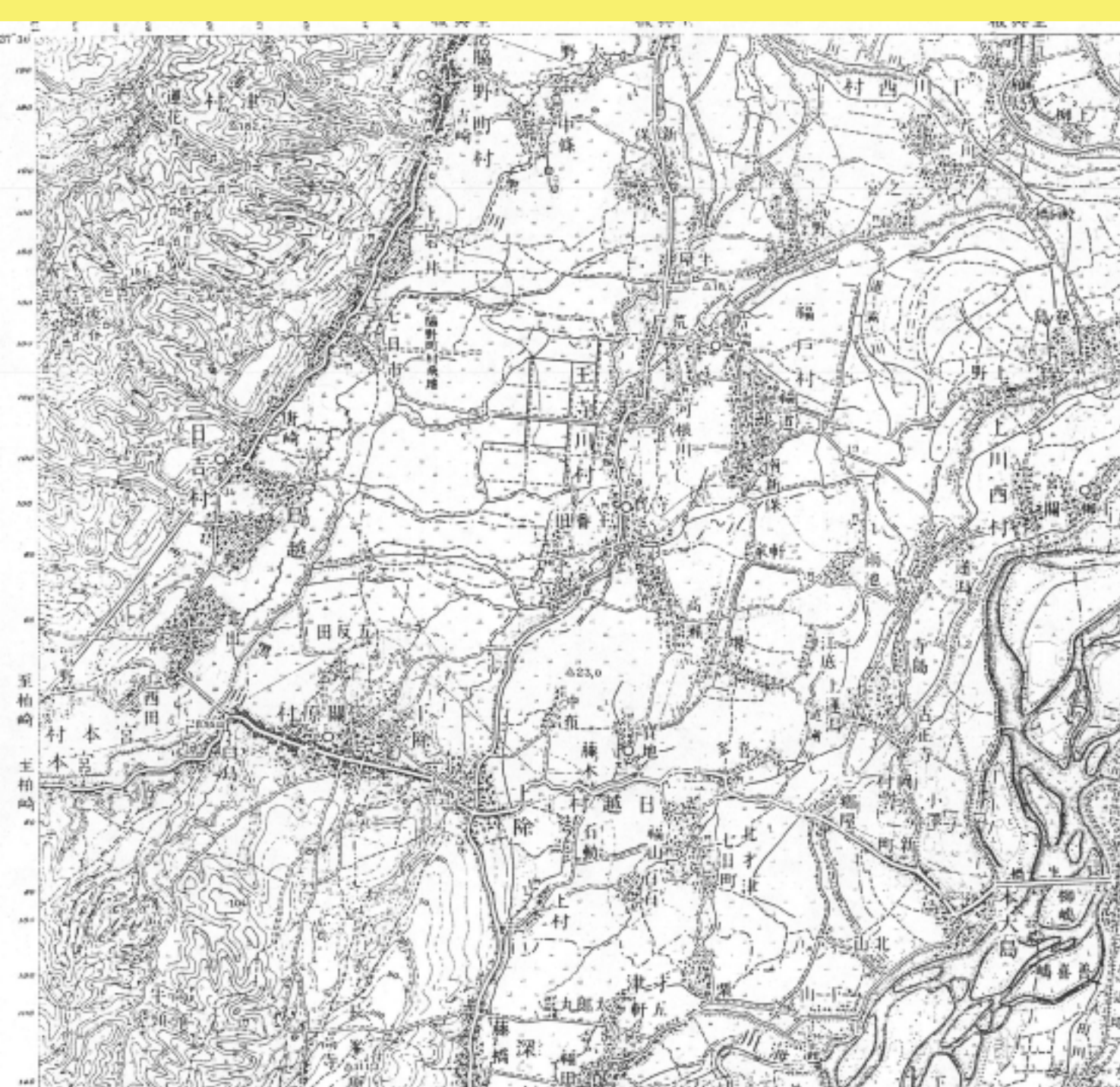
Challenges of Numbers Further Compounded

- Units of Taxation & Land Organization (Villages) “disappear” with appearance of first modern government (1868 – 1912)
 - Amalgamation into large political units
- Remaining traces
 - Station names
 - Bus stops
 - Etc.
- How to recover large numbers of locations?
 - Central point
 - Boundaries

Early Scientific Mapping in Japan

- 1:50,000 series, early 20th century

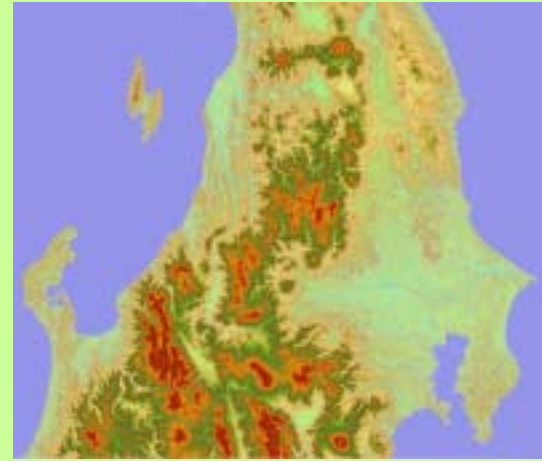




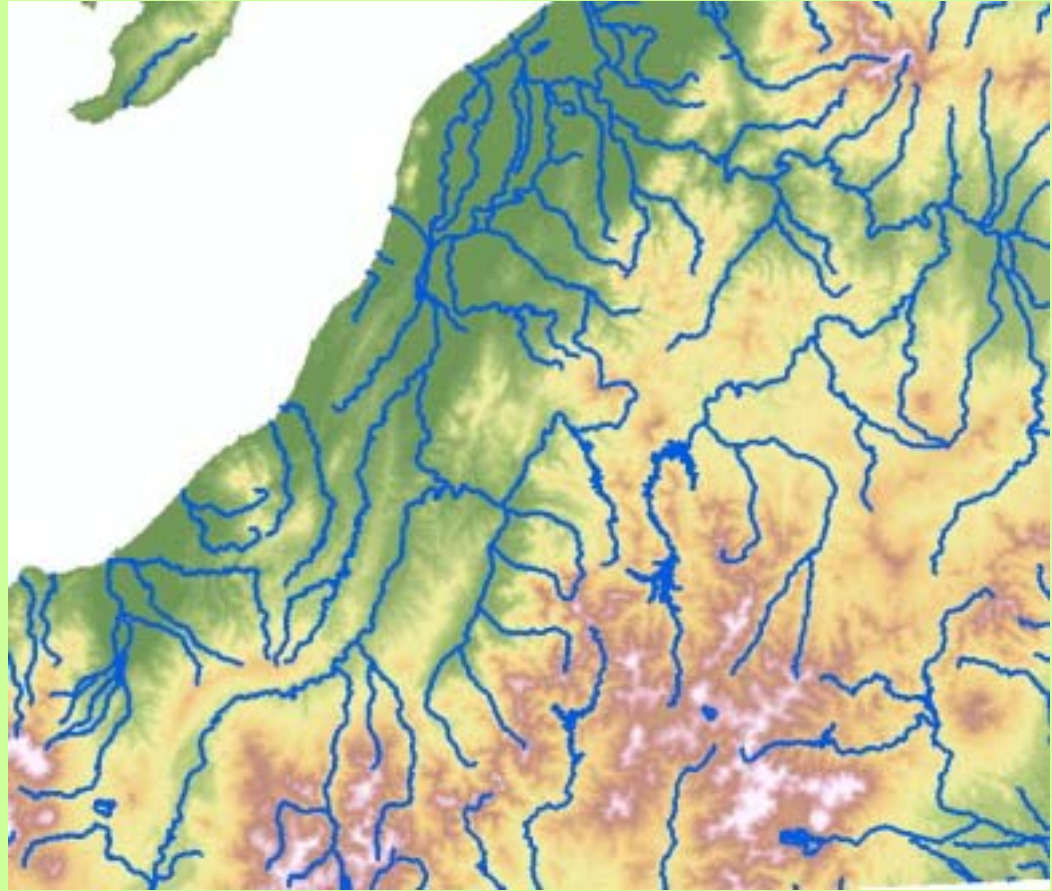
Some “settle-
ment” data
from 1:50000
maps

Are there alter-
nate sources of
location for re-
search involv-
ing many plac-
es?

Comparison NLA data with Modern Maps & Local Knowledge



Niigata



Central Niigata
(Nagaoka, Yoshikawa)

Direct Comparison early 20th century 1:50k, late 20th century 1:25k Maps further discouraging



1:50000 early 20th Cent

1:25000 late 20th Cent

Still some promise in Modern data

- National land agency publishes digital place names (natural features, customary names, parks, public facilities, etc.) on CD.
- Does this hold promise of providing, through maintenance of roster of customary names, etc., accurate location data for mid-19th century settlements?

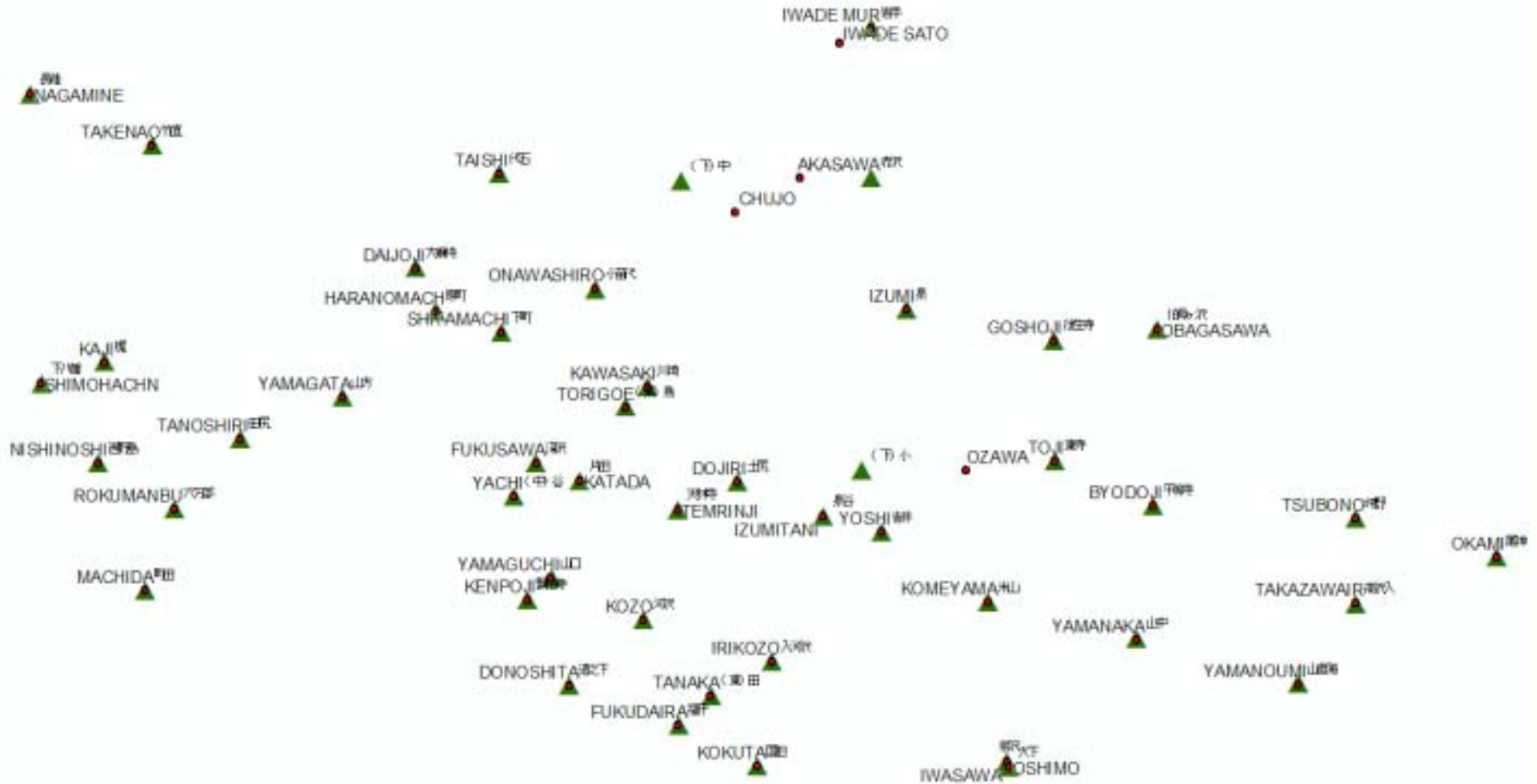
NLA CD Data

1/25000 地形図 の読み	標準地域 メッシュ コード	都道 府県 名	市区 町村 名	注記 番号	大 分 類	中 分 類	小 分 類	注記 文字 列	注記文 字列の 読み	大 コー ド	文 字 数	代表点経 度	代表点緯 度	公共 施設 ID	史跡名勝 天然記念 物フラグ	元図 コー ド
えちごよ した	563847	新潟 県	三条 市	24	2	3	0	大島	おおじ ま	4	2	1385802	374021.5	0	0	3
えちごよ した	563847	新潟 県	三条 市	31	2	3	0	代官 島	だいか んじま	4	3	1385908	374024	0	0	3
えちごよ した	563847	新潟 県	三条 市	32	2	3	0	荻島	おぎじ ま	4	2	1385917	374003.6	0	0	3

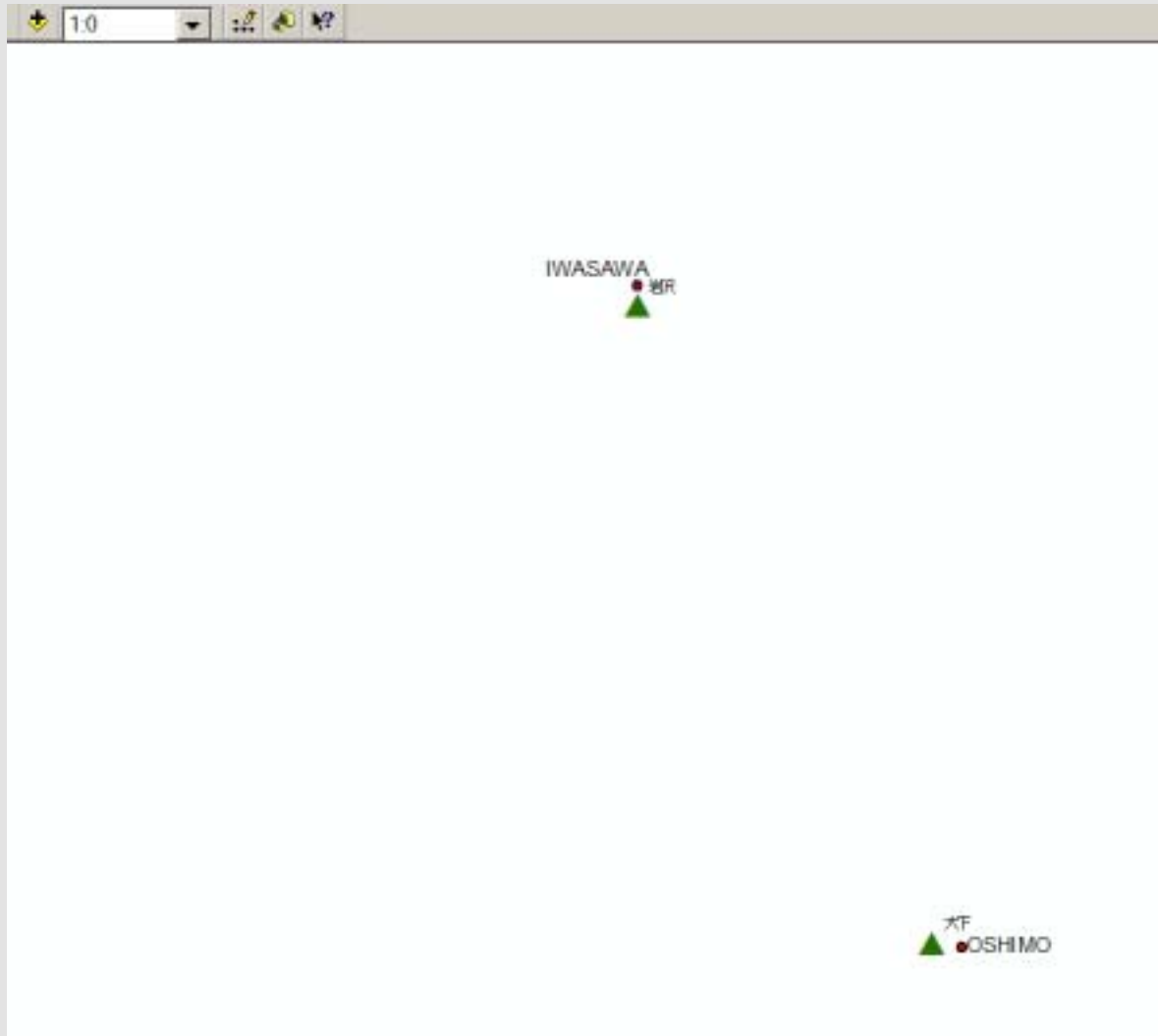
Are these points good center point estimates?

- Compare 4 dozen points with locations based on local informants
- Hand-held GPS measures vs. NLA data
- Done all in one afternoon, down and dirty

Yoshikawa area I: NLA data = Green, GPS Data = Red

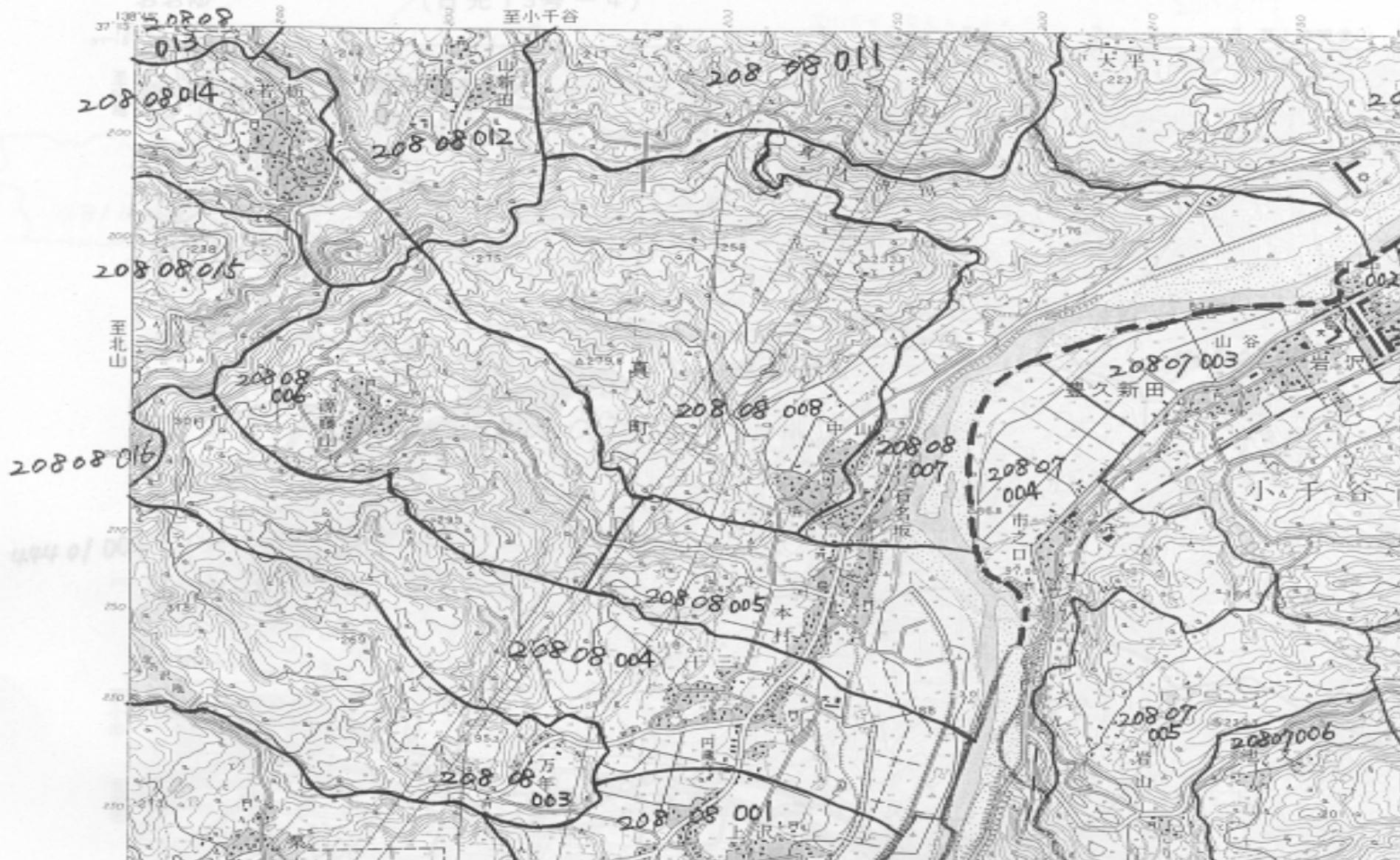


Yoshikawa area II: NLA data = Green, GPS Data = Red



Potential for Boundary location? Ministry of Ag. Data

1:25,000 地形図 NJ-54-35-1-4
いわさわ 地形図 (高田1号-4)



Conclusions

- Contemporary data for Japan has potential to assist locating center point and boundary data for pre-modern (19th century) settlements in large numbers
 - Not complete (name changes)
 - Not perfect (boundary changes)
 - But a start
- Is this finding generalizable?
 - Open question, but suggests value of investigation
 - Value of thinking flexibly, not just about agencies which have primary responsibility for mapping